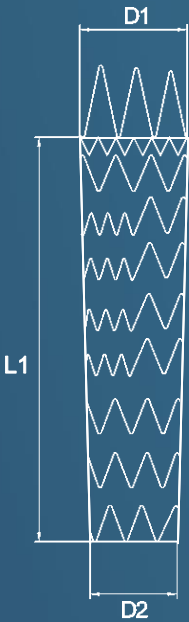


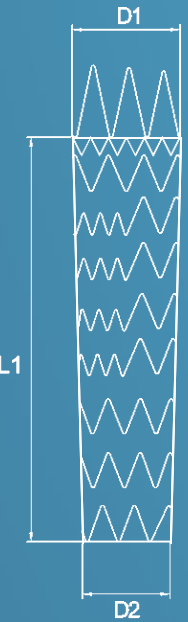
STRAIGHT

Code	Proximal Diameter(D1) (mm)	Distal Diameter(D2) (mm)	Total Covered Length(L1) (mm)	Delivery System (Fr.)
TAA3636B040	36	36	40	23
TAA3636B060	36	36	60	23
TAA3636B080	36	36	80	23
TAA3636B100	36	36	100	23
TAA3636B120	36	36	120	23
TAA3636B140	36	36	140	23
TAA3636B160	36	36	160	23
TAA3636B180	36	36	180	23
TAA3636B200	36	36	200	23
TAA3838B040	38	38	40	23
TAA3838B060	38	38	60	23
TAA3838B080	38	38	80	23
TAA3838B100	38	38	100	23
TAA3838B120	38	38	120	23
TAA3838B140	38	38	140	23
TAA3838B160	38	38	160	23
TAA3838B180	38	38	180	23
TAA3838B200	38	38	200	23
TAA4040B040	40	40	40	24
TAA4040B060	40	40	60	24
TAA4040B080	40	40	80	24
TAA4040B100	40	40	100	24
TAA4040B120	40	40	120	24
TAA4040B140	40	40	140	24
TAA4040B160	40	40	160	24
TAA4040B180	40	40	180	24
TAA4040B200	40	40	200	24
TAA4242B040	42	42	40	24
TAA4242B060	42	42	60	24
TAA4242B080	42	42	80	24
TAA4242B100	42	42	100	24
TAA4242B120	42	42	120	24
TAA4242B140	42	42	140	24
TAA4242B160	42	42	160	24
TAA4242B180	42	42	180	24
TAA4242B200	42	42	200	24
TAA4444B040	44	44	40	24
TAA4444B060	44	44	60	24
TAA4444B080	44	44	80	24
TAA4444B100	44	44	100	24
TAA4444B120	44	44	120	24
TAA4444B140	44	44	140	24
TAA4444B160	44	44	160	24
TAA4444B180	44	44	180	24
TAA4444B200	44	44	200	24
TAA4646B040	46	46	40	24
TAA4646B060	46	46	60	24
TAA4646B080	46	46	80	24
TAA4646B100	46	46	100	24
TAA4646B120	46	46	120	24
TAA4646B140	46	46	140	24
TAA4646B160	46	46	160	24
TAA4646B180	46	46	180	24
TAA4646B200	46	46	200	24

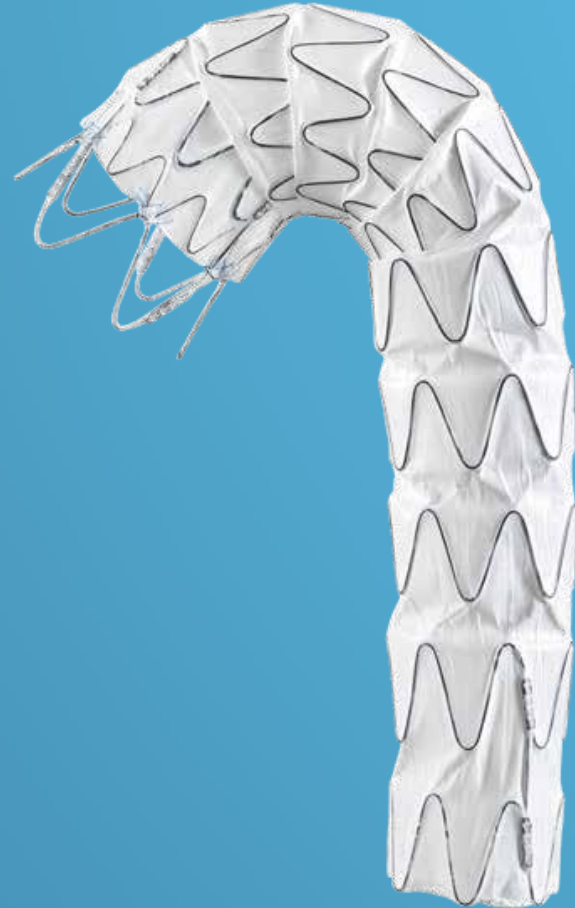


DISTAL TAPERED

Code	Proximal Diameter(D1) (mm)	Distal Diameter(D2) (mm)	Total Covered Length(L1) (mm)	Delivery System (Fr.)
TAA2420B160	24	20	160	21
TAA2622B160	26	22	160	21
TAA2824B120	28	24	120	21
TAA2824B160	28	24	160	21
TAA3026B120	30	26	120	21
TAA3026B160	30	26	160	21
TAA3026B200	30	26	200	21
TAA3228B120	32	28	120	21
TAA3228B160	32	28	160	21
TAA3228B200	32	28	200	21
TAA3430B120	34	30	120	23
TAA3430B160	34	30	160	23
TAA3430B200	34	30	200	23
TAA3632B120	36	32	120	23
TAA3632B160	36	32	160	23
TAA3632B200	36	32	200	23
TAA3834B120	38	34	120	23
TAA3834B160	38	34	160	23
TAA3834B200	38	34	200	23
TAA4036B160	40	36	160	24
TAA4238B160	42	38	160	24
TAA4440B160	44	40	160	24
TAA2822B180	28	22	180	21
TAA2822B200	28	22	200	21
TAA3024B180	30	24	180	21
TAA3024B200	30	24	200	21
TAA3226B180	32	26	180	21
TAA3226B200	32	26	200	21
TAA3428B180	34	28	180	23
TAA3428B200	34	28	200	23
TAA3630B180	36	30	180	23
TAA3630B200	36	30	200	23
TAA3832B180	38	32	180	23
TAA3832B200	38	32	200	23
TAA4034B180	40	34	180	24
TAA4034B200	40	34	200	24
TAA4236B180	42	36	180	24
TAA4236B200	42	36	200	24
TAA4438B180	44	38	180	24
TAA4438B200	44	38	200	24
TAA2820B200	28	20	200	21
TAA3022B200	30	22	200	21
TAA3224B200	32	24	200	21
TAA3426B200	34	26	200	23
TAA3628B200	36	28	200	23
TAA3830B200	38	30	200	23
TAA4032B200	40	32	200	24
TAA4234B200	42	34	200	24
TAA4436B200	44	36	200	24
TAA4638B200	46	38	200	24

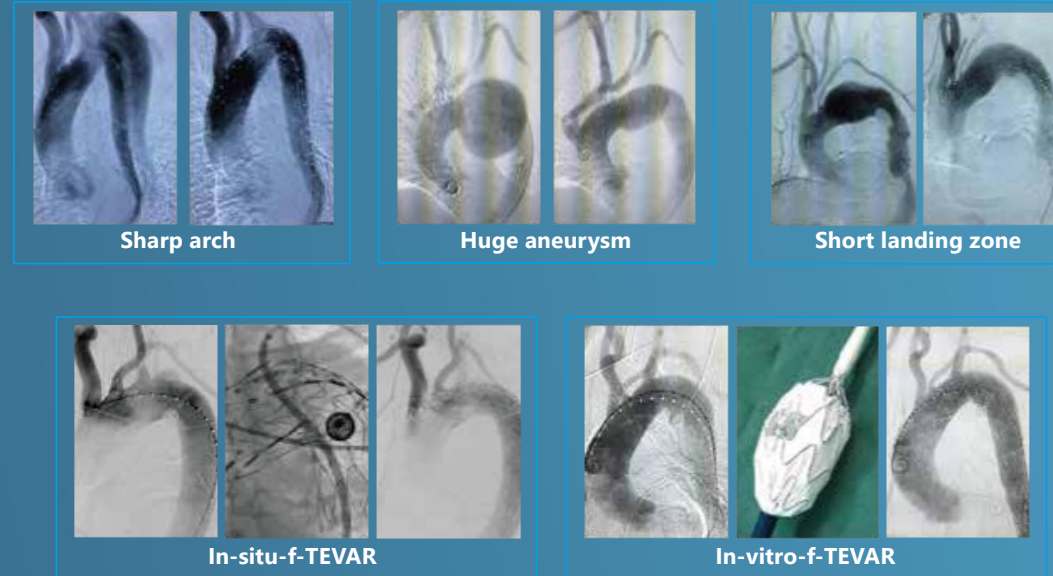


For more sizes information, please contact Lifetech local representative.



Over **10** years clinical experience

Ankura™ TAA Stent Graft Cases



e-PTFE dual membrane

- excellent biocompatibility, no Type III endoleak

Proximal mini wave

- enhances apposition to the aortic wall

No suture on the main body

- avoids pinhole leakage (Type IV endoleak)

Self-expanding nitinol stent

- offers stable radial force

Kink-resistant introducer with hydrophilic coating

- provides easier access



EASY 3 - STEP DEPLOYMENT PROCESS



STEP 1
Slow, controlled deployment
for precise stent graft placement



STEP 2
Quick deployment option if desired



STEP 3
Tip capture release
(Remove the green button , pull back the black button)



Connecting bar on the outer curvature

- offers axial support
- avoids stent shortening



Asymmetric waves design

- conforms to the natural curvature of the thoracic aorta
- reduces possibility of kinking



Tip capture mechanism

- provides precise placement and controlled deployment

Ankura™ TAA Stent Graft Product Specification

STRAIGHT

Code	Proximal Diameter(D1) (mm)	Distal Diameter(D2) (mm)	Total Covered Length(L1) (mm)	Delivery System (Fr.)
TAA2020B040	20	20	40	21
TAA2020B060	20	20	60	21
TAA2020B080	20	20	80	21
TAA2020B100	20	20	100	21
TAA2020B120	20	20	120	21
TAA2222B040	22	22	40	21
TAA2222B060	22	22	60	21
TAA2222B080	22	22	80	21
TAA2222B100	22	22	100	21
TAA2222B120	22	22	120	21
TAA2424B040	24	24	40	21
TAA2424B060	24	24	60	21
TAA2424B080	24	24	80	21
TAA2424B100	24	24	100	21
TAA2424B120	24	24	120	21
TAA2424B140	24	24	140	21
TAA2424B160	24	24	160	21
TAA2626B040	26	26	40	21
TAA2626B060	26	26	60	21
TAA2626B080	26	26	80	21
TAA2626B100	26	26	100	21
TAA2626B120	26	26	120	21
TAA2626B140	26	26	140	21
TAA2626B160	26	26	160	21
TAA2828B040	28	28	40	21
TAA2828B060	28	28	60	21
TAA2828B080	28	28	80	21
TAA2828B100	28	28	100	21
TAA2828B120	28	28	120	21
TAA2828B140	28	28	140	21
TAA2828B160	28	28	160	21
TAA2828B180	28	28	180	21
TAA2828B200	28	28	200	21
TAA3030B040	30	30	40	21
TAA3030B060	30	30	60	21
TAA3030B080	30	30	80	21
TAA3030B100	30	30	100	21
TAA3030B120	30	30	120	21
TAA3030B140	30	30	140	21
TAA3030B160	30	30	160	21
TAA3030B180	30	30	180	21
TAA3030B200	30	30	200	21
TAA3232B040	32	32	40	21
TAA3232B060	32	32	60	21
TAA3232B080	32	32	80	21
TAA3232B100	32	32	100	21
TAA3232B120	32	32	120	21
TAA3232B140	32	32	140	21
TAA3232B160	32	32	160	21
TAA3232B180	32	32	180	21
TAA3232B200	32	32	200	21
TAA3434B040	34	34	40	23
TAA3434B060	34	34	60	23
TAA3434B080	34	34	80	23
TAA3434B100	34	34	100	23
TAA3434B120	34	34	120	23
TAA3434B140	34	34	140	23
TAA3434B160	34	34	160	23
TAA3434B180	34	34	180	23
TAA3434B200	34	34	200	23

